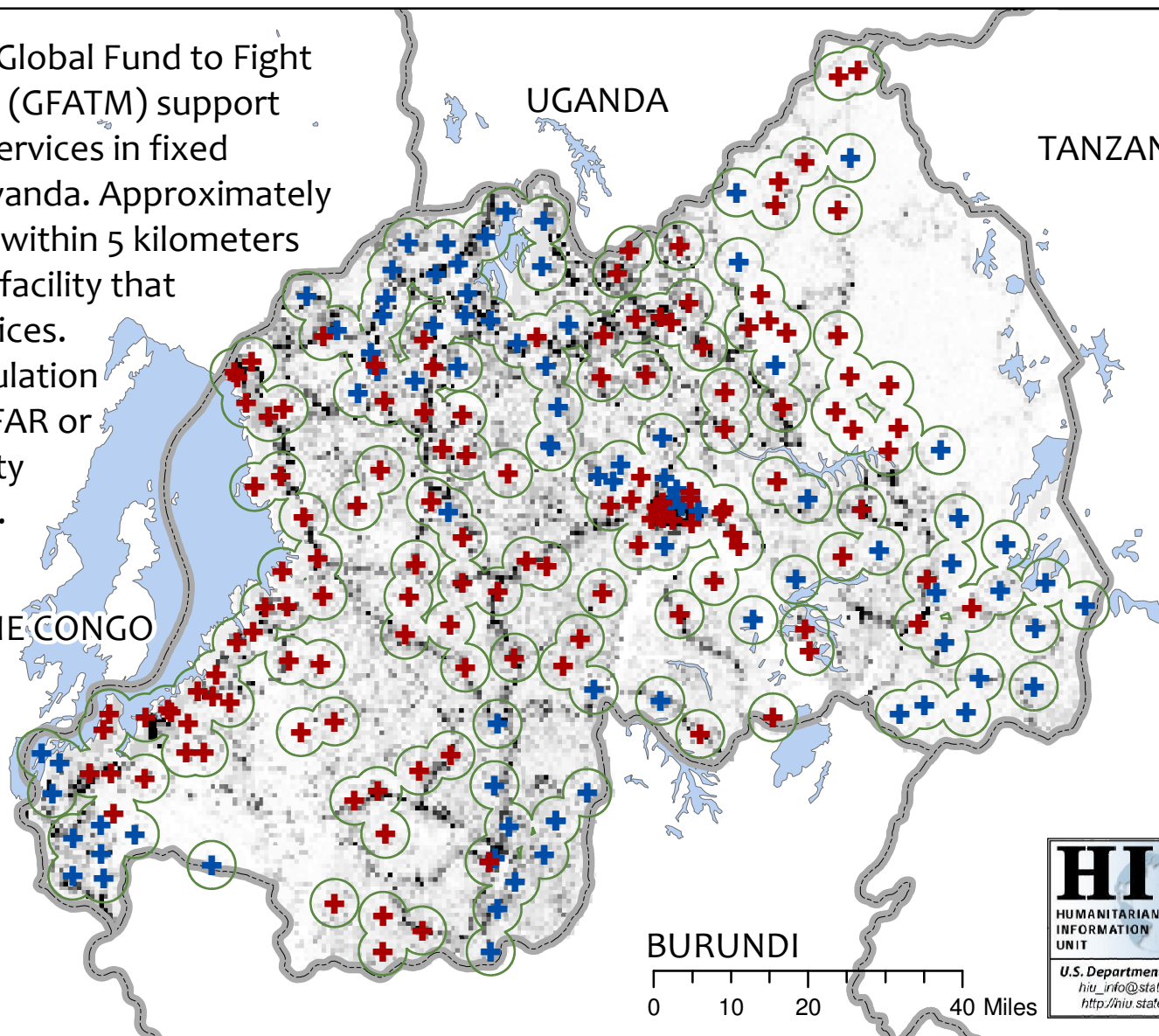
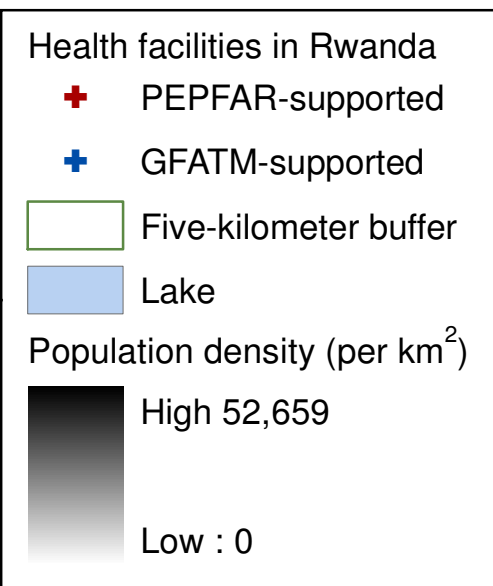


# Rwanda: Geographic coverage of PEPFAR and GFATM, Care and Treatment, 2009

The PEPFAR program and The Global Fund to Fight AIDS, Tuberculosis and Malaria (GFATM) support HIV/AIDS care and treatment services in fixed health facilities throughout Rwanda. Approximately 46% of Rwanda's population is within 5 kilometers of a PEPFAR-supported health facility that offers care and treatment services. Approximately 65% of the population is within 5 kilometers of a PEPFAR or GFATM-supported health facility that offers care and treatment.

DEMOCRATIC REPUBLIC OF THE CONGO



Note: Latitude and longitude are not available for some health facilities where PEPFAR supports facility-based services. As a result, geographic coverage is believed to be greater than stated. PEPFAR-supported facilities not shown: AVEGA Kigali Clinic, Bathasaida Health Center, Byahi Health Center, Kinihira Health Center, Mwendo Health Center, Mugeru Health Center, Rugarama Health Center and all prison-based services. Data: Landscan 2008; Rwanda PEPFAR Program