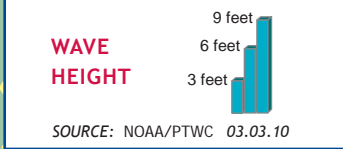




KEY

USAID/OFDA	DoD
EMERGENCY RELIEF ACTIVITIES	HEALTH
LOGISTICS AND EMERGENCY RELIEF SUPPLIES	SHELTER AND SETTLEMENTS
TRANSPORTATION OF RELIEF SUPPLIES	

04.08.10



Three aftershocks registering magnitude 6.0 or greater struck Libertador O'Higgins Region on March 11th, 2010.

MAGNITUDE 6.0
MAGNITUDE 6.9
MAGNITUDE 6.7

AFFECTED AREAS

DoD	
IFRC	
TBD	
DoD	

PACIFIC OCEAN

CHILE

ARGENTINA



MAGNITUDE 8.8
2/27/10 06:34:14 UTC

Location of EMEDS unit

EARTHQUAKE INTENSITY

The Modified Mercalli (MMI) Intensity Scale*

ESTIMATED MMI INTENSITY			
4	LIGHT	8	SEVERE
5	MODERATE	9	VIOLENT
6	STRONG	10	EXTREME
7	VERY STRONG		

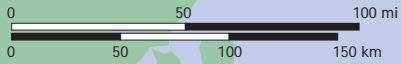
*MMI is a measure of ground shaking and is different from overall earthquake magnitude as measured by the Richter Scale.
Source: USGS

POPULATION EXPOSED TO SHAKING

The Modified Mercalli (MMI) Intensity Scale

MMI INTENSITY	POPULATION
4	1,218,000
5	2,721,000
6	751,000
7	7,285,000
8	5,480,000

Source: USGS/PAGER Alert Version: 7
Note: Estimated extents of shaking intensity and affected populations do not reflect the effects of aftershocks.



Satellite Imagery Observations

Chile Earthquake and Tsunami - Bay of Concepción

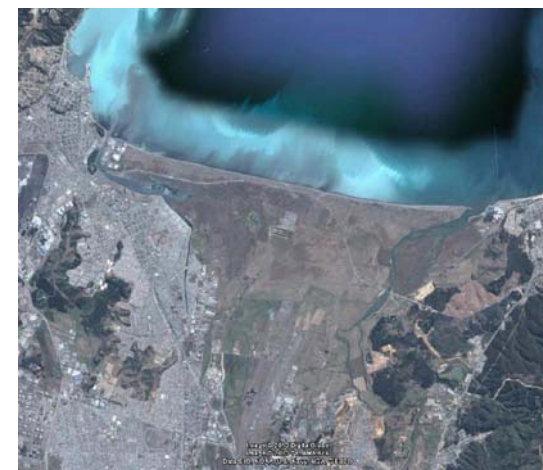
Image shows coastal inundation and floating debris.



USAID
FROM THE AMERICAN PEOPLE

36°44'50.47"S 73° 3'24.30"W

Pre-Event Imagery



Locator Map



Copyright Rapideye 2010
Imagery Date: 2/27/2010

Produced by: Geographic Information Unit
Office of Foreign Disaster Assistance
U.S. Agency for International Development
Imagery provided by Google & Geospatial
Post Event Image Date: February 27, 2010
Pre Event Image Date: Unknown
GLIDE #: TS-2010-000035-CHL
Produced: March 2, 2010

Satellite Imagery Observations

Chile Earthquake and Tsunami - Constitución

Image shows inundation extents affecting community and airstrip.



USAID
FROM THE AMERICAN PEOPLE

35°19'35.44"S 72°24'16.14"W

Pre-Event Imagery



Locator Map



Produced by: Geographic Information Unit
Office of Foreign Disaster Assistance
U.S. Agency for International Development
Imagery provided by Google & Geoye
Post Event Image Date: February 27, 2010
Pre Event Image Date: Unknown
GLIDE #: TS-2010-000035-CHL
Produced: March 4, 2010